



SMART SERIES

LOCKSMART LOOKSMART

We are proud to introduce 'SMART SERIES', a range of Powerful & Stylish Locks that combine extraordinary strength with a smooth & elegant design. It is a pioneering range uniting the unmatched power of Anti-Theft Engineering and the precision of Smart Plus Key for enhanced security with a sleek PVD finish.

Created at state-of-the-art manufacturing, R & D and testing facilities to provide powerful security and unmatched style to your home.

Crafted with :

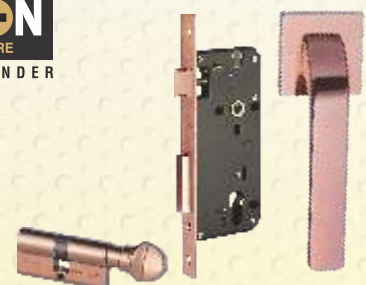


LATCH MODEL

DEAD-BOLT MODEL



Easy to open smart door lock
Convenience at your fingertips !



Scan for
Smart Series Video



LATCH MODEL

DEAD-BOLT MODEL



RG : Rose Gold



GB : Gun Black



GL : Gold



AB : Antique Brass



SN : Satin Nickel

LOCK FEATURES

- Reversible LATCH BOLT, common for both inside & outside opening doors
 - Door HOLD-BACK button to prevent unforeseen door closing
 - Designed 3D Duo-Tone Plate
- Concealed mounting of lock for aesthetics

ALSO AVAILABLE
DIMPLE KEY MODEL
Finish : AB & SN



Latch Model

Dead-Bolt Model

SMART KEY PATENT
268561

PATENT APPLIED
FOR LATCH LOCK

DESIGN REGISTERED
FOR LOCK - 343364 / 371321

DESIGN REGISTERED
FOR LIGHT KEY - 257169



Developed, Manufactured & Marketed by :
**WELMADE LOCKING SYSTEMS
PRIVATE LIMITED**
Corporate Office : J-61, MIDC, Bhosari, Pune - 411 026.
Maharashtra (India) Tel. : 020 - 2712 2546 / 2468 / 1857
E-mail : service@europalocks.com
marketing@europalocks.com, Website : www.europalocks.com



SCAN FOR
MORE INFO

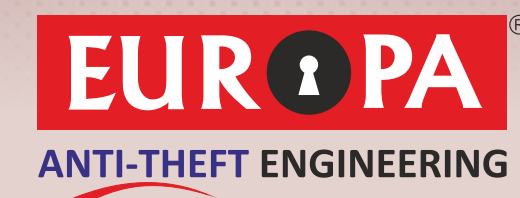
Product images shown are for representation purpose, actual products may vary.

All Product/March 23/000



IS YOUR EXISTING LOCK REALLY SAFE?

Find out today, compare with...





The EUROPA journey began in the year 1984 with the Mission "ANTI-THEFT ENGINEERING". Dr. P. A. Joshi after studying in Germany, founded this Company in the Cultural and Industrial city of Pune. Since then, **Welmade Locking Systems Private Limited** has carved for itself an enviable niche in the Indian Market.



DR P. A. Joshi,
Founder & Chairman

Who believes in disruptive innovation and continual development.

We constantly INNOVATE to design and manufacture locks with best-in-class features meeting Global functions, finish, load (strength) & life (warranty) standards.

The Europa Edge

More than 35 years of excellence with single point ownership of the complete process (Research & Development, Design, Manufacturing, Marketing, Sales & Service) to ensure end to end ANTI – THEFT locking solutions for our customers. On a mission of preventing theft across country and make India theft free, safe and secure place to live in and providing ultimate Peace of Mind.

✓
50+ IP Registrations
& Applications
(Patent, Design, Etc).

✓
500+ theft site visits & 1000+
ANTI-THEFT trials for
"ANTI-THEFT ENGINEERING"
expertise.

✓
Every product goes through
more than 50+ ANTI-THEFT tests
in a controlled set up on actual
doors during development.

✓
Experience of 5 million
installations through 200+
trained technicians across India.

STANDARD SERIES

HEXABOLT
6 TIMES STRONGER
India's Strongest Main Door Lock



DIAMANT
PADLOCK
WITH DIMPLE KEY



EURIPA
ANTI-THEFT ENGINEERING
SOLIDO
3 TON
DIMPLE KEY
DISC PADLOCK

**MAIN
DOOR
LOCK**



EURIPA
JEMMY-PROOF
DOOR LOCK
VERTICAL INTERLOCKING BOLTS



PARMA
SHIELD YOUR HOME
INTERLOCKING MAIN DOOR LOCK



FURNITO
SLIDING WARDROBE LOCK
DRAWER LOCK with integrated handle



EURIPA
DIMPLE KEY
Night Latch



EURIPA
CENTRE
SHUTTER LOCK
ARMoured - 2 WAY LOCKING
"Jack se bhee *na* khule"



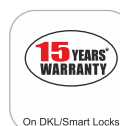
EURIPA
Feather Touch
PRESS BUTTON CYLINDER LOCK
Easy to open *smart* door lock
Convenience at your fingertips !



roundlock
HEAVY DUTY DESIGN



KEY MANAGEMENT SOLUTION



kindly contact us for Site visits and Free Safety Audits of your house to suggest you the best Locking solutions. Free fitment service is available*

*Terms & conditions apply

MORTISE SERIES



**MORTISE
ROSE HANDLE**

Zink & Brass Series

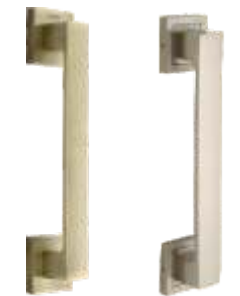


**MORTISE
PLATE HANDLE**

EPSILON
SMOOTH & SECURE
MORTISE CYLINDER



**MORTISE
PULL HANDLE**

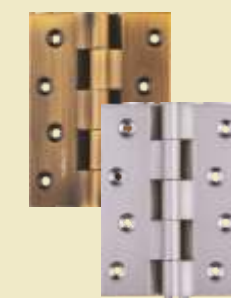


**MORTISE
LOCK BODY**



ACCESSORIES

HINGES



**TOWER
BOLT**



**DOOR
HANDLE**

